

# **100 Polish threemovers (1893-1992)**

selected by

**Marek Kwiatkowski**

*Toruń; 2009*

---

Diagrams: Christian Poisson's 1Echecs.ttf

## 100 Polish threemovers (1893-1992)

The collection shows, in my opinion, the best selected problems of Polish composers, which were published in the mentioned above period. In most cases the high quality of these compositions was earlier confirmed by publication in the FIDE Albums.

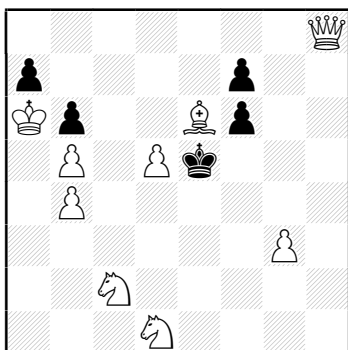
Past wars had an influence on emigration of many our composers. Nevertheless, each of them repeatedly spoke one's connection with the Polish chess composition. For this obvious reason, their outstanding compositions had to be considered too.

A few words are needed about Marian Wróbel (1907-1960) who was the mentor of many Polish composers. He was actively creating the basics of an interesting hybrid of the Bohemian and strategic schools. A large number of the selected problems arose thanks to his teaching. The collection is limited to a maximum of 7 threemovers per author.

### Index of authors

CZARNECKI Tadeusz - 33, 42, 43, 46, 50, 60  
 FUX Janusz - 28, 30, 34, 36  
 GLUZIŃSKI Tadeusz - 22  
 GOLDSTEIN Aleksander - 26, 27, 40, 44, 49, 52  
 GRABOWSKI Kazimierz - 6, 13, 18  
 GRZANKOWSKI Wacław - 47, 58  
 HEBELT Wacław - 29, 35, 59, 64, 87  
 IWANOW Eugeniusz - 66  
 JAROSZ Oswald - 4  
 KAPICA Ryszard - 88  
 KONIKOWSKI Jerzy - 73  
 KWIATKOWSKI Marek - 95, 97, 99, 100  
 LIMBACH Saturnin - 56  
 PAWŁOWSKI Tadeusz - 37  
 PFEIFFER Mieczysław - 31, 62  
 PILTZ Karol - 11  
 PTEMPSKI Edward - 1  
 PTEMPSKI Wacław - 2, 3, 5, 41  
 PRZEPIÓRKA Dawid - 7, 8, 9, 10, 12, 16, 24  
 RDUCH Franciszek - 14, 15, 17, 21, 25, 32, 39  
 ROSOLAK Władysław - 61  
 RUSINEK Jan - 92, 94, 96  
 RUSZCZYŃSKI Piotr - 76, 78, 79, 84, 86, 90, 93  
 SUCHODOLSKI Włodzimierz - 55, 57, 69, 72, 74, 77  
 SYPNIEWSKI Karol - 20  
 SZKOP T. - 54  
 SZWEDOWSKI Leopold - 68, 75, 82, 89, 98  
 TRZĘSOWSKI Andrzej - 70, 71  
 TUHAN BARANOWSKI Leon - 19  
 TURA Waldemar - 67, 81, 83, 91  
 WÓJCIK Marian - 38  
 WRÓBEL Marian - 23, 45, 48, 51, 53, 63, 65  
 ZALEWSKI Mieczysław - 80, 85

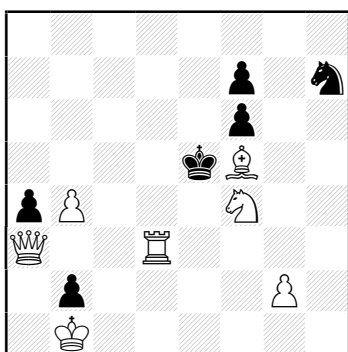
1. Edward POTEPSKI  
Kurier Warszawski 1893



#3 ( 9 + 5 )

1.Bf5! zz  
1...Kf5 2.Qh5+ Ke4 3.Sf2#  
1...Kd5 2.Qf6 Kc4 3.Qf7#  
1...Kd6 2.Qb8+ Kd5 3.Sde3#, 2...Ke7 3.d6#  
model mate, flight-giving key, sacrifice key,  
zugzwang

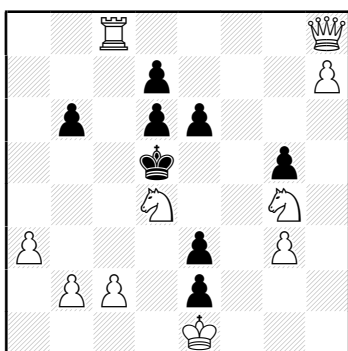
2. Waław POTEPSKI  
1st Pr Kurier Warszawski 1894



#3 ( 7 + 6 )

1.Rd4! zz  
1...Kf5 2.Qf3 ~ 3.Rd5#  
1...Kd4 2.Qb2+ Kc4 3.Bd3#, 2..Ke3 3.Sd5#  
1...Sg5 2.Rd5+ Kf4 3.g3#  
[1...Sf8 2.Qd3 ~ 3.Qe4#]  
model mate, give-and-take key,  
sacrifice key, zugzwang

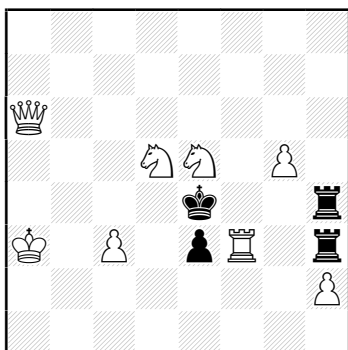
3. Waław POTEPSKI  
3rd Pr Kurier Warszawski 1895



#3 ( 10 + 8 )

1.Rc4! zz  
1...Ke4 2.Qe5+ de5 3.Sf6#  
1...Kc4 2.Se3+ Kc5 3.b4#  
1...b5 2.Sb3 bc4 3.Qa8#  
[1...e5 2.Qg8+ Ke4 3.Sf6#]  
model mate, flight-giving key, sacrifice key,  
zugzwang, sacrifice

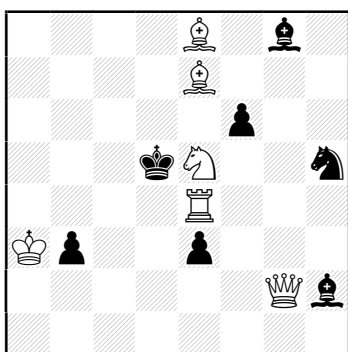
4. Oswald JAROSZ  
Kurier Warszawski 1896 (V.)



#3 ( 8 + 4 )

1.Sf7! ~ 2.Sf6+ Kf3 3.Qf1#  
 1...Rf3 2.Qc4+ Kf5 3.Se7#  
 1...Kd5 2.Rf5+ Ke4 3.Sd6#  
 1...Kf3 2.Qf1+ Ke4 3.Sf6#  
 [1...Rf4(h6) 2.Rf4+ Kd5 3.Qc4#]  
 model mate, give-and-take key, meredith

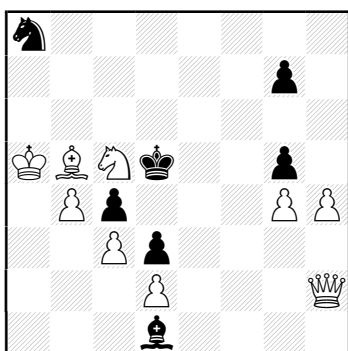
5. Waclaw POTEMPSKI  
1st Pr Tygodnik Ilustrowany 1897 (V.)



#3 ( 6 + 7 )

1.Bf8! ~ 2.Re3+ Ke6 3.Bd7#  
 1...Sf4 2.Sg4 Sg2 3.Sf6#  
 1...Sg3 2.Sc6 .Se4 3.Qg8#  
 [1...fe5 2.Rf4+ e4 3.Qe4#  
 1...Be5 2.Rf4+ Ke6 3.Qg8#  
 1...Ke6 2.Qg8+ Kf5 3.Qg4#]  
 model mate, battery, retreating key

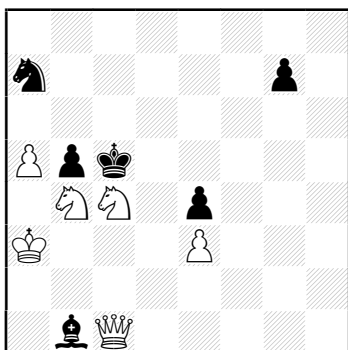
6. Kazimierz GRABOWSKI  
4th Pr Fränkisches Volksblatt 1915



#3 ( 9 + 7 )

1.Bd7! zz  
 1...Bc2(b3,a4) 2.Bf5 ~ 3.Be4#  
 1...Be2(f3) 2.Bc8 Kc6 3.Bb7#  
 1...g6 2.Se4 ~ 3.Sf6#, 2...Ke4 3.Bc6#  
 [1...Sb6 2.Kb6, 1...Sc7 2.Qc7,  
 1...Bg4 2.Bg4, 1...gh4 2.Qf4]  
 model mate, zugzwang, focal point

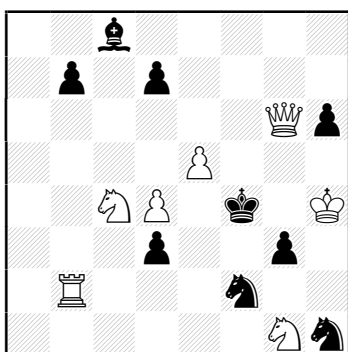
7. Dawid PRZEPIÓRKA  
Robert Sahlberg Ty. 1916



#3 (6 + 6)

1.Qf1! ~ 2.Qf7 ~ 3.Qd5#  
1...bc4 2.Qf8+ Kb5 3.Qf5#  
1...Sc8 2.Qf5+ Kc4 3.Qc8#  
1...Sc6 2.Sa6+ Kd5 3.Qf7#  
model mate, battery-destroying key, echo,  
meredith, manoeuvre

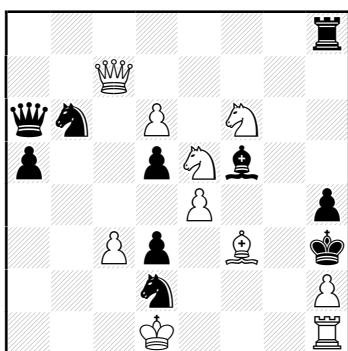
8. Dawid PRZEPIÓRKA  
L'Italia Scacchistica 1916



#3 (7 + 9)

1.Rb4! ~ 2.Sd6 Ke3 3.Qh6#  
1...d2 2.Sb6 Ke3 3.Sd5#  
1...d5 2.Qh6+ Ke4 3.Sd6#  
model mate, remote self-block, ambush key

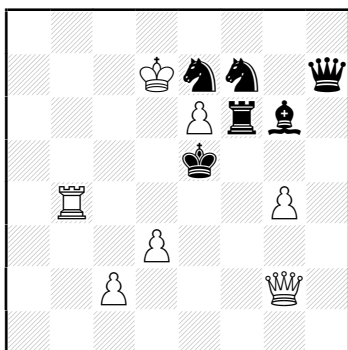
9. Dawid PRZEPIÓRKA  
De Maasbode 1916



#3 (10 + 10)

1.Qc8! ~ (Sf3) 2.Qf5+ Kg2 3.Qf3#  
1...Bc8 2.Sg6 Sf3 3.Sf4#  
1...Qc8 2.Sd3 Sf3 3.Sf4#  
1...Sc8 2.Sd5 Sf3 3.Sf4#  
1...Rc8 2.Sh5 Sf3 3.Sf4#  
model mate, sacrifice key

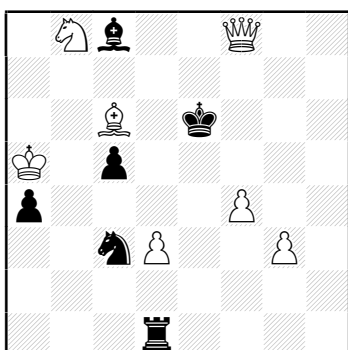
10. Dawid PRZEPIÓRKA  
3rd Pr Algemeen Handelsblad 1917



#3 (7 + 6)

1.Qd2! ~ (Bd3) 2.Qc3+ Kd5 3.Qd4#  
1...Kd5 2.Rb5+ Kd4 3.c3#  
1...Be4 2.d4+ Kd5 3.c4#  
1...Sd5 2.Re4+ Be4 3.d4#  
model mate, flight-giving key, self-block

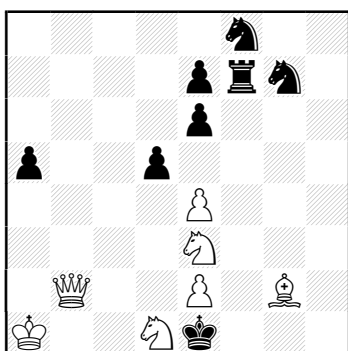
11. Karol PILTZ  
5th Pr Göteborger Sch. 1920



#3 (7 + 6)

1.Bf3! ~ (Rd3) 2.f5+ Ke5 3.Sc6#  
1...Se4 2.de4 Rd5 3.ed5#  
1...Bb7 2.Bg4+ Kd5 3.Qd8#  
1...Bd7 2.Sa6 Bc6 3.Sc5#  
model mate, retreating key

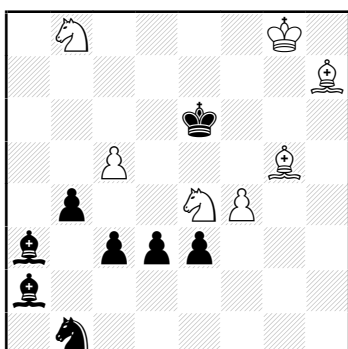
12. Dawid PRZEPIÓRKA  
1st Pr Teplitz-Schonauer Anzeiger 1922



#3 (7 + 8)

1.Qc2! ~ 2.Qd3 ~ 3.Sc2#  
1...de4 2.Bf1 ~ 3.Qc3#, 2...Rf1 3.Sg2#  
1...Rf2 2.Sb2 Rg2 3.Sd3#  
1...Sf5 2.Sf1 ~ 3.Qd2#  
1...d4 2.Sc4 ~ 3.Qd2#  
[1...Rf3 2.ef3 ~ 3.Qf2#]  
model mate, self-block

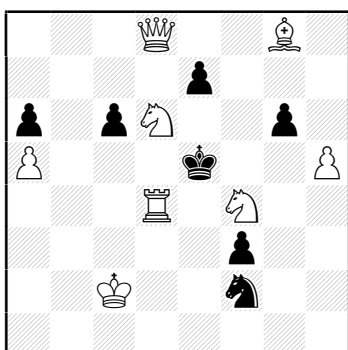
13. Kazimierz GRABOWSKI  
4th Pr L'Italia Scacchistica 1922



#3 (7 + 8)

1.Sf6! ~ 2.Sc6 ~ 3.f5#  
 1...Ke7+ 2.Sd5+ Ke6 3.Sc7#  
 1...Bd5 2.Se8 Ba2 3.Sc7#  
 1...b3 2.f5+ Ke7 3.Sc6#, 2...Ke5 3.Sc6#  
 model mate, give-and-take key,  
 check-allowing key, manoeuvre

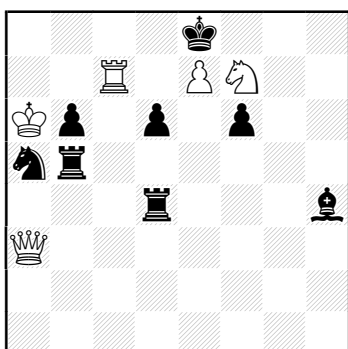
14. Franciszek RDUCH  
1st Pr British Chess Problem Society 1923



#3 (8 + 7)

1.Bd5! zz  
 1...Kd4 2.Sc4 ~ 3.Se6#, 2...Kc5 3.Qb6#,  
 2...cd5 3.Qd5#  
 1...ed6 2.Qg5+ Kd4 3.Se6#  
 1...c5 2.Sg6+ Kf6 3.Qe7#, 2...Kd4 3.Sf5#  
 1...cd5 2.Sg6+ Ke6 3.Qe7#, 2...Kf6 3.Qe7#,  
 2...Kd4 3.Qb6#  
 1...Sf~ 2.Re4+ Kf6 3.Qe7#  
 1...Kf6 2.Qh8+ Kg5 3.Se6#  
 1...g~ 2.Qe7+ Kd4 3.Sf5#  
 1...e6 2.Sc4+ Kf5 3.Be6#, 2...Kd4 3.Se6#  
 model mate, self-block, zugzwang,  
 sacrifice key

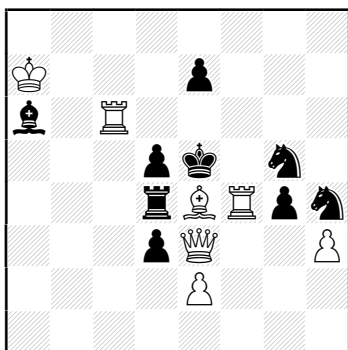
15. Franciszek RDUCH  
5th Pr Swedish Chess Federation 1923



#3 (5 + 8)

1.Qf3! ~ 2.Qa8+ Kf7 3.e8Q#  
 1...Rdd5 2.Qh5 Rh5 3.Sd6#  
 1...Rd5 2.Sd6+ Rd6 3.Qh5#  
 1...f5 2.Sg5 Bg5 3.Qh5#  
 1...Kf7 2.e8Q+ Ke8 3.Qa8#  
 [1...Sc6(b7) 2.Qc6+ Kf7 3.e8Q#]  
 model mate, Plachutta, sacrifice

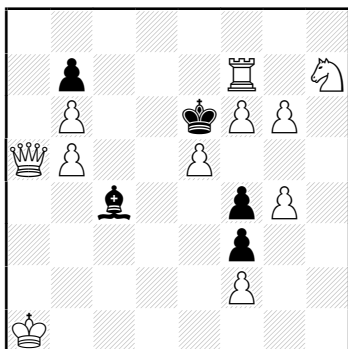
16. Dawid PRZEPIÓRKA  
1st Pr Good Companions 1924



#3 ( 7 + 9 )

1.Qg3 ! ~ (Re4) 2.Rg4+ Kd4 3.e3#  
1...de4 2.Rf5+ Kf5 3.hg4#  
1...Se4 2.Rf6+ Sg3 3.Re6#  
model mate, battery, self-block

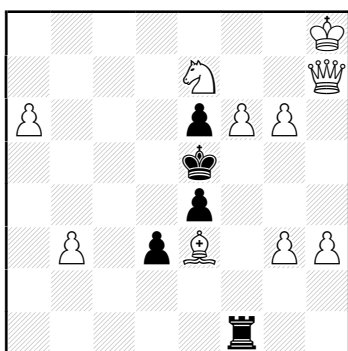
17. Franciszek RDUCH  
1st Pr Trollhättans Schacksallskap 1925



#3 ( 11 + 5 )

1.Rd7! zz  
1...Ba2(b3) 2.Qd2 Ke5 3.Qe1#  
1...Bf1(e2) 2.Qa8 Ke5 3.Qe8#,  
2...Kd7 3.Sf8#  
1...Bb5 2.Rd3 Ke5 3.Qe1#, 2...Bd3 3.Sf8#  
1...Kd7 2.Sf8+ Kd8 3.Qa8#  
1...Bd3 2.Rd3 Ke5 3.Qe1#  
1...Ke5 2.Qc3+ Ke6 3.Sf8#  
model mate, focal point, zugzwang,  
give-and-take key, sacrifice key

18. Kazimierz GRABOWSKI  
1st Pr Słowo Polskie 1925

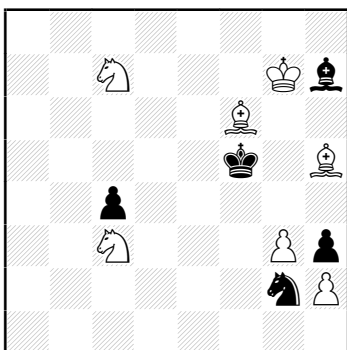


#3 ( 10 + 5 )

1.Sf5! ~ (Kd5) 2.Bd4 ef5 3.Qd7#  
1...Kf5 2.Qh5+ Kf6 3.Qg5#  
1...Kf6 2.Qg7+ Kf5 3.g4#  
1...ef5 2.Qd7 Kf6 3.Qd6#  
1...Rf5 2.Qc7+ Kf6 3.Qg7#  
model mate, sacrifice key, flight-giving key



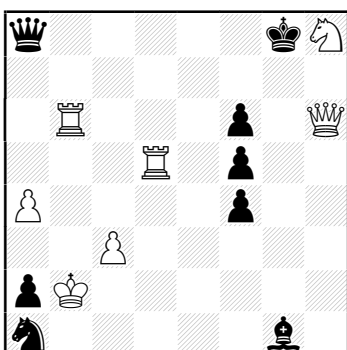
19. Leon TUHAN BARANOWSKI  
Świat Szachowy 1926



#3 (7 + 5)

1.Be2! ~ 2.g4+ Kf4 3.Sd5#  
1...Se3 2.S3b5 Ke4 3.Sd6#  
1...Bg8 2.S7b5 ~ 3.Sd4#, 2...Ke6 3.Bg4#  
model mate, meredith, retreating key

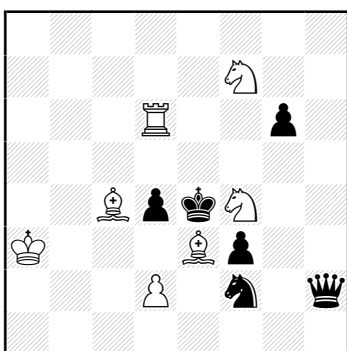
20. Karol SYPNIEWSKI  
Chess Amateur 1927



#3 (7 + 8)

1.Rd2! zz  
1...Sb3 2.Rb8+ Qb8 3.Rg2#  
1...Sc2 2.Rg2+ Qg2 3.Rb8#  
1...Bf2 2.Rd7 Qf8 3.Qh7#  
[1...Bb6 2.Qg6+ Kh8 3.Rh2#]  
zugzwang, focal point, sacrifice

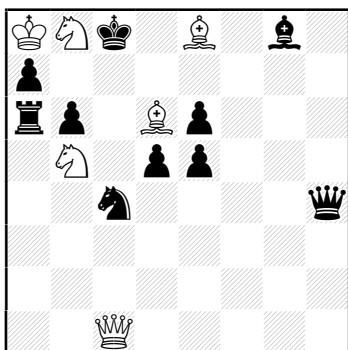
21. Franciszek RDUCH  
3rd Pr Świat Szachowy 1930



#3 (7 + 6)

1.Sh5! ~ (gh5) 2.Re6+ Kf5 3.Sh6#  
1...Qd6+ 2.Sd6+ Ke5 3.Bf4#  
1...Qh5 2.Rd4+ Kf5 3.Rf4#  
1...de3 2.d3+ Sd3 3.Bd3#, 2...Kf5 3.Be6#  
[1...Qe5(f4) 2.Rd4+, 1...Kf5 2.Be6+]  
model mate, sacrifice key,  
check-allowing key

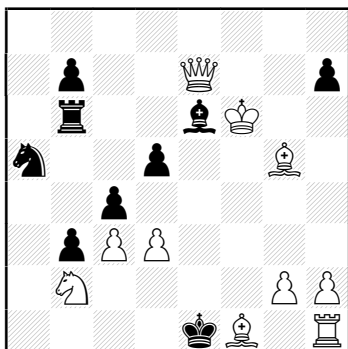
22. Tadeusz GLUZIŃSKI  
Świat Szachowy 1930



#3 (6 + 10)

1.Qh6! ~ (Sd6) 2.Bd7+ Kd8 3.Qh4#  
1...Qd8 2.Qf8 ~ (Sd6) 3.Bd7#,  
2...Qe8 3.Qe8#  
1...Qh6 2.Be7 ~ 3.Bd7#  
[1...Kd8 2.Qh4+ Ke8 3.Qe7#,  
2...Kc8 3.Bd7#]  
model mate, unpinning key, sacrifice key

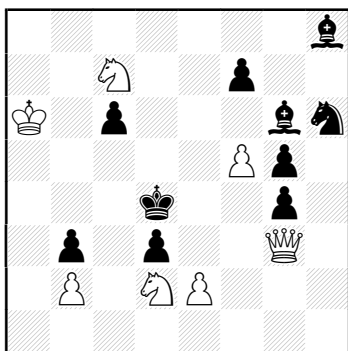
23. Marian WRÓBEL  
1st Pr Sypniewski MT 1932



#3 (10 + 9)

1.Bh6? Sc6!, 1.Bf4? Rd6!  
1.Bc1! ~ 2.Kg7 ~ 3.Qh4#  
1...Sc6 2.Qh7 ~ 3.Qh4#  
1...Rd6 2.Qd6 ~ 3.Qg3#  
1...Rc6 2.Ke5 ~ 3.Qh4#  
1...cd3 2.Sd1 ~ 3.Bd3#  
[1...Rb4 2.Qe6+ (Qd6,Qc7)]  
model mate, option key

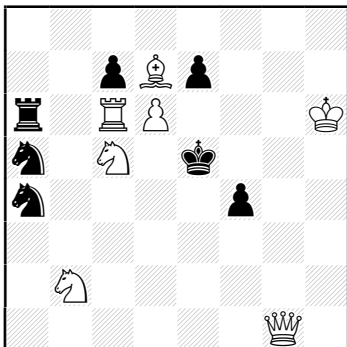
24. Dawid PRZEPIÓRKA  
2nd Pr Nederlandse Schaakbond 1932



#3 (7 + 10)

1.Ka5! ~ 2.ed3 ~ 3.Sb3#  
1...Bf5 2.Kb6 ~ 3.e3#, 2...de2 3.Qc3#  
1...Sf5 2.Sb3+ Ke4 3.ed3#, 2...Kc4 3.Qd3#  
1...f6 2.Se6+ Kd5 3.e4#  
[1...Kc5 2.Sb3+ Kc4 3.Qd3#]  
model mate, 3/4 albino

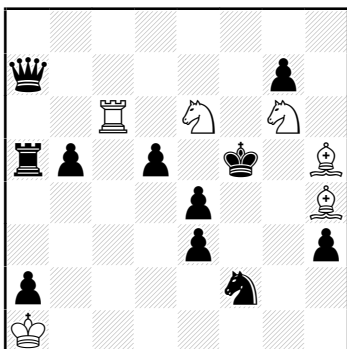
25. Franciszek RDUCH  
2nd Pr White JT 1932



#3 ( 7 + 7 )

1.Bf5! ~ 2.Qg7+ Kd5 3.Be4#  
1...Sc6 2.Sc4+ Kd5 3.Be6#  
1...Rc6 2.Sd7+ Kd5 3.Qd1#  
[1...Sb2 2.Sd7+, 1...Sc3 2.S5d3(d7)+,  
1...Sc5 2.Rc5+, 1...f3 2.Qe3+,  
1...Kd5 2.Be4+]  
model mate, self-block, flight-giving key,  
sacrifice key

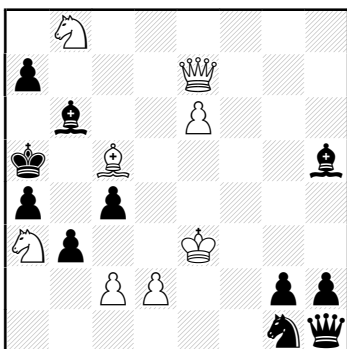
26. Aleksander GOLDSTEIN  
2nd Pr Els Escacs a Catalunya 1933



#3 ( 6 + 11 )

1.Rd6! ~ 2.Rd5+ Ke6 3.Sf4#  
1...Sd3 2.Rd7 Qd7 3.Sd4#  
1...b4 2.Rb6 Qb6 3.Sg7#  
model mate, focal point

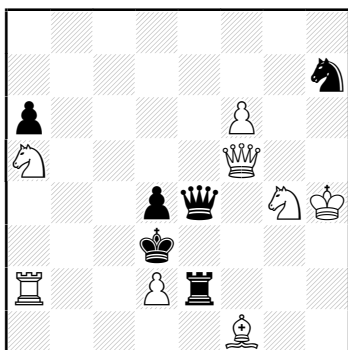
27. Aleksander GOLDSTEIN  
1st Pr Magasinet 1933



#3 ( 8 + 11 )

1.Kd4! ~ 2.Sc4+ Kb5 3.Qd7#  
1...Sf3+ 2.Kd5 ~ 3.Bb4#  
1...Se2+ 2.Kc4 ~ 3.Bb4#  
1...Be2 2.Kc3 ~ 3.Bb4#  
1...Bf3 2.Ke5 ~ 3.Bb4#  
model mate, obstruction, unpin,  
check-allowing key

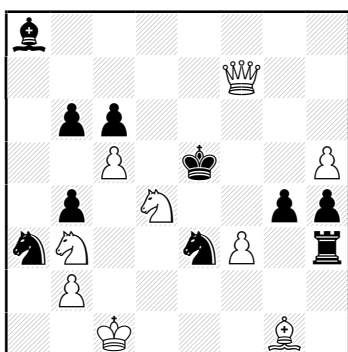
28. Janusz FUX  
1st Pr British Chess Federation 1934



#3 ( 8 + 6 )

1.Qg6! zz  
1...Sf6 2.Rb2 Qg6 3.Sf2#,  
2...S~ 3.Qa6#  
1...Sg5 2.Kg3 Qg6 3.Sf2#  
1...Sf8 2.Kh3 Qg6 3.Sf2#  
model mate, unpin, zugzwang, retreating key

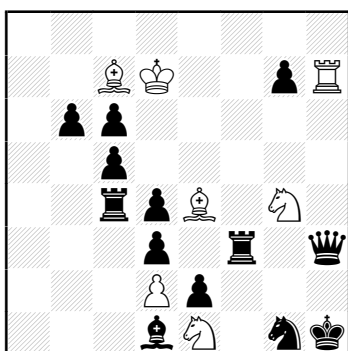
29. Waclaw HEBELT  
C Warszawski Klub Szachowy 1934



#3 ( 9 + 10 )

1.Sd2! ~ (Rf3) 2.Qc7+ Kd4 3.Qd6#  
1...Kd4 2.Qf4+ Kc5 3.Qe5#  
1...bc5 2.f4+ Kd4 3.Qd7#  
[1...Sac4(b5) 2.f4+ Kd4 3.Qc4#]  
model mate, self-pin, flight-giving key,  
sacrifice key

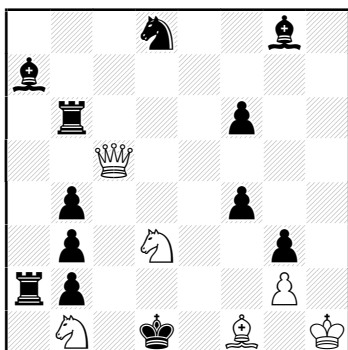
30. Janusz FUX  
2nd Pr Warszawskie Klub Szachowy 1934



#3 ( 7 + 13 )

1.Bd6! ~ 2.Kc7 ~ (Qh4) 3.Sf2#  
1...Ra4 2.Kc6 ~ (Qh4) 3.Sf2#  
1...g5 2.Kd8 ~ (Qh4) 3.Sf2#  
1...g6 2.Ke8 ~ (Qh4) 3.Sf2#  
model mate, unpin, bi-valve

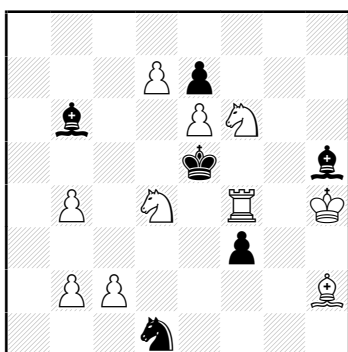
31. Mieczysław PFEIFFER  
2nd Hm Warszawski Klub Szachowy 1934



#3 ( 6 + 12 )

1.Qg1! ~ 2.Be2+ Ke2 3.Sf4#  
1...Bb8 2.Se5 ~ (fe5) 3.Bd3#  
1...Se6 2.Sc5 ~ (Sc5) 3.Bd3#  
model mate, battery, sacrifice,  
flight-giving key

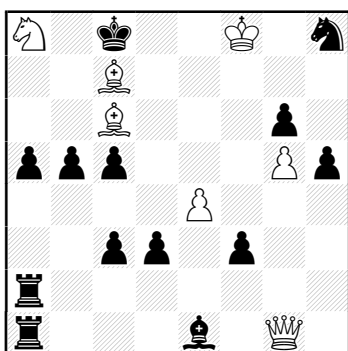
32. Franciszek RDUCH  
3rd Pr Trollhättans Schacksallskap 1934



#3 ( 10 + 6 )

1.b3! ~ (Bd4) 2.Rf3+ Ke6 3.d8S#  
1...Se3 2.Rf5+ Kd4 3.Be5#  
1...Bg6 2.Re4+ Kf6 3.Be5#  
1...ef6 2.Rg4+ Kd5 3.c4#  
model mate, self-block, cross, battery

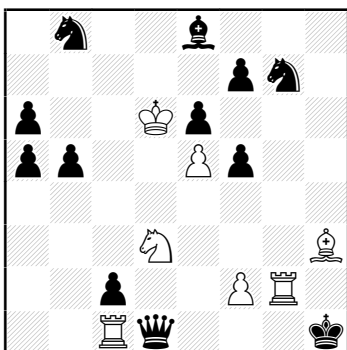
33. Tadeusz CZARNECKI  
C Warszawski Klub Szachowy 1934



#3 ( 7 + 13 )

1.Bd5! ~ 2.Qc5 ~ 3.Sb6#  
1...Bf2 2.Qh2 Bg3 3.Qh3#  
1...Rf2 2.Qg3 Rh2 3.Sb6#  
1...f2 2.Qf1 ~ 3.Qh3#  
model mate, Grimshaw, flight-giving key

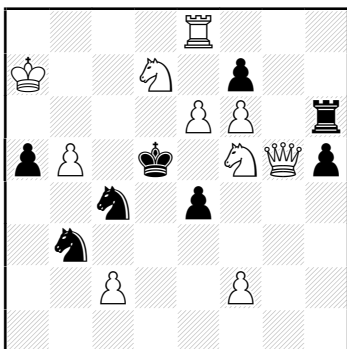
34. Janusz FUX  
1st Pr Els Escacs a Catalunya 1934



#3 ( 7 + 12 )

1.f3! ~ 2.Kc7 Qc1 3.Sf2#  
1...Bc6 2.Ke7 Qc1 3.Sf2#  
1...Bd7 2.Kc5 Qc1 3.Sf2#  
model mate, obstruction, unpin

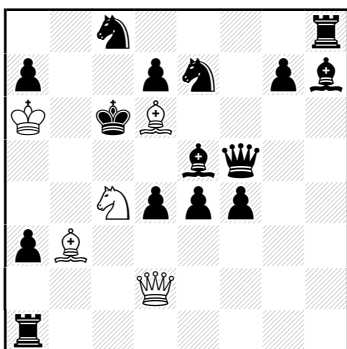
35. Waław HEBELT  
C British Chess Federation 1935



#3 ( 10 + 8 )

1.Qg3! ~ 2.Qc7 Sd4 3.Qc5#  
1...Sd4 2.Qd6+ Sd6 3.Se3#  
1...Sc5 2.Qe5+ Se5 3.Sb6#  
1...Rf6 2.Se7+ Ke6 3.Sf8#  
[1...Sc~ 2.Se3+]  
model mate, self-block, sacrifice,  
battery-destroying key

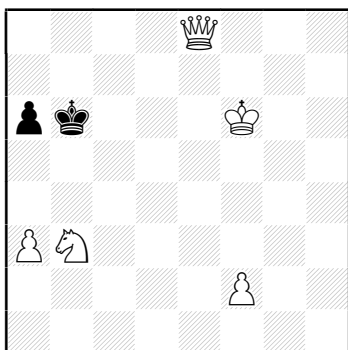
36. Janusz FUX  
1st Pr Gazeta Polska 1936



#3 ( 5 + 15 )

1.Qc2! ~ 2.Sa5+ Kd6 3.Sb7#  
1...Bf6 2.Se5+ Kd6 3.Sf7#  
1...Sg6 2.Se3+ Kd6 3.Sf5#  
1...Sg8 2.Sb6+ Kd6 3.Sc8#  
model mate, remote unblocking,  
self-interference, battery

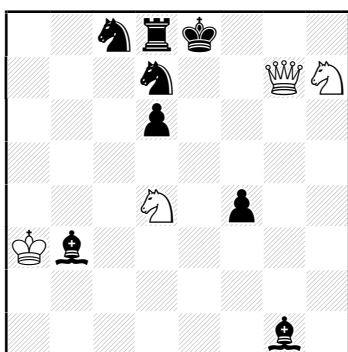
37. Tadeusz PAWŁOWSKI  
Wiadomości Szachowe 1937



#3 ( 5 + 2 )

1.Sa5! ~ 2.Qe7 Ka5 3.Qb4#  
1...Ka7 2.Qc6 ~ 3.Qb7#  
1...Kc7 2.Qc6+ Kd8 3.Sb7#  
1...Kc5 2.Qc6+ Kd4 3.Qc4#  
1...Ka5 2.Qb8 ~ 3.Qb4#  
model mate, miniature, star, flight-giving key,  
sacrifice key

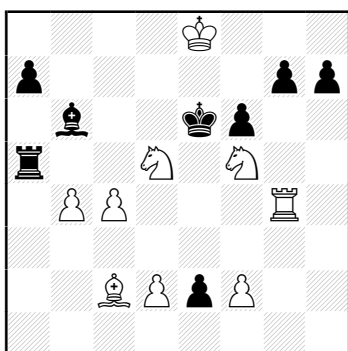
38. Marian WÓJCIK  
Arbeider Magasinet 1939



#3 ( 4 + 8 )

1.Sf5! ~ 2.Qe7+ Se7 3.Sd6#  
1...Bc5+ 2.Kb3 ~ 3.Qg6#  
1...Bf7 2.Qf8+ Sf8 3.Sf6#  
model mate, meredith, sacrifice,  
check-allowing key

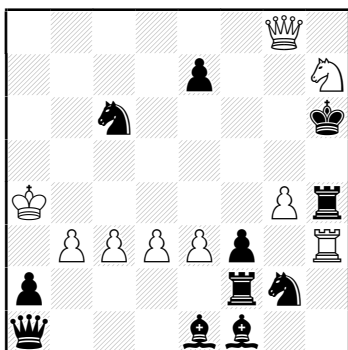
39. Franciszek RDUCH  
1st Pr Revista Romana de Sah 1940



#3 ( 9 + 8 )

1.c5! ~ (Rc5) 2.Sf4+ Ke5 3.d4#  
1...Bc5 2.Sc7+ Ke5 3.f4#  
1...Kd5 2.Se7+ Ke5 3.Re4#  
1...Ke5 2.Sde3 Rc5 3.Re4#  
1...g5 2.Re4+ Kf5 (Kd5) 3.Se7#  
model mate, flight-giving key

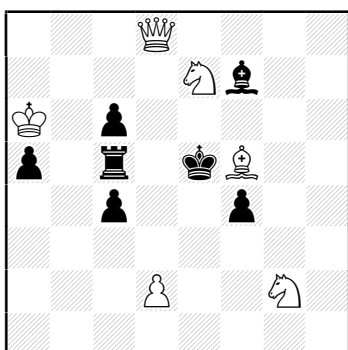
40. Aleksander GOLDSTEIN  
1st/2nd Pr Shakhmaty 1940



#3 ( 9 + 11 )

1.Qf7! ~ 2.Rh4+ Sh4 3.g5#  
1...Rb2 2.c4 ~ (Rh3) 3.g5#  
1...Rc2 2.b4 ~ (Rh3) 3.g5#  
1...Rd2 2.e4 ~ (Rh3) 3.g5#  
1...Re2 2.d4 ~ (Rh3) 3.g5#  
model mate, valve, unpin

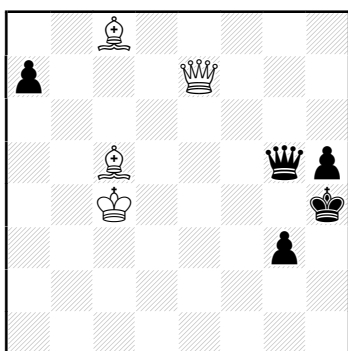
41. Waław POTEMPSKI  
Szachista Polski 1946 (V.)



#3 ( 6 + 7 )

1.Sh4! ~ 2.Qd4+ Kd4 3.Sf3#  
1...c3 2.Sg6+ Bg6 3.d4#  
1...Bh5 2.Sc8 Rd5 3.Qh8#  
[1...Kf6(Bd5) 2.Sg6+]  
model mate, sacrifice

42. Tadeusz CZARNECKI  
2nd Pr Głos Narodu 1946

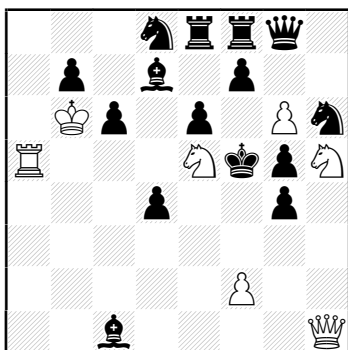


#3 ( 4 + 5 )

1.Kb5! ~ (a6+) 2.Ka6 zz g2 3.Bf2#,  
2...Qe7 3.Be7#  
1...g2 2.Qe1+ Qg3 3.Be7#  
1...a5 2.Ka4 zz g2 3.Bf2#,  
2...Qe7 3.Be7#  
model mate, meredith, self-pinning key,  
check-allowing key, unpin, zugzwang



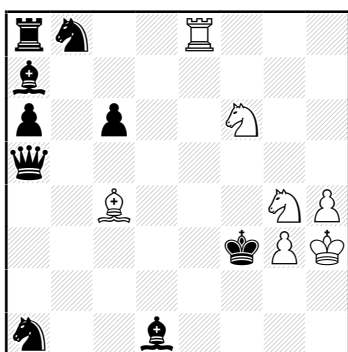
43. Tadeusz CZARNECKI  
1st/2nd Pr Przepórka MT 1946



#3 ( 7 + 15 )

1.Rc5! ~ (Qg7) 2.Qf1 ~ (Qe5) 3.Qd3#  
1...fg6 2.Sc6+ (Sf3?) e5 3.Sd4#  
1...Qg6 2.Sf3+ (Sc6?) e5 3.Sd4#,  
2...Ke4 3.Se1#  
[1...Bc~ 2.Qb1+,1...g3 2.Qf3+]  
model mate, dual avoidance, battery,  
self-block, self-pin

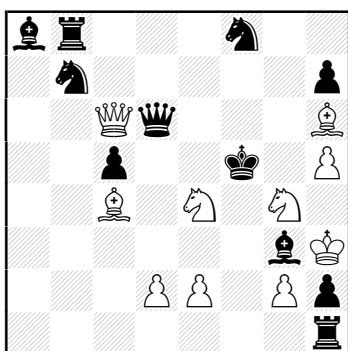
44. Aleksander GOLDSTEIN  
1st Pr Szachista Polski 1946



#3 ( 7 + 9 )

1.Se4! ~ 2.Rf8+ Ke4 3.Rf4#  
1...Bd4 2.Re5 (Bb5?) Be5 3.Sg5#,  
2...Qe5 3.Sd2#  
1...Sd7 2.Bb5 (Re5?) Re8 3.Sg5#,  
2...Qb5 3.Sd2#  
model mate, focal point, self-interference,  
dual avoidance

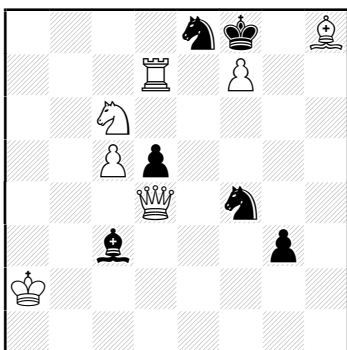
45. Marian WRÓBEL  
1st Pr Action 1946



#3 ( 10 + 11 )

1.Bf7? Qd3!  
1.Bg8! ~ 2.Qd5+ Qd5 3.Sg3#  
1...Bg~ 2.Qd6 Sd6 3.Sd6#  
1...Bf4 2.Sg3+ Bg3 3.e4#  
1...Sb~ 2.Sd6+ Bd6 3.e4#  
[1...Qd3 2.Bh7+ (Qe6+)]  
model mate, anti-junction point, sacrifice,  
black correction, option key

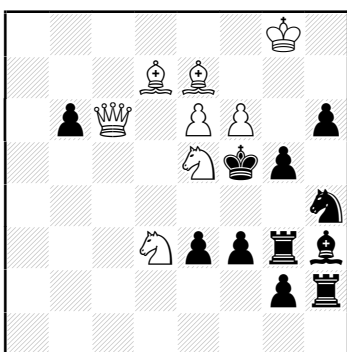
46. Tadeusz CZARNECKI  
Lidova Demokracie 1947



#3 (7 + 6)

1.Se5! ~ (Bd4) 2.Rd8 Be5 3.fe8(Q)#  
1...Se~ 2.Sg6+ Sg6 3.Bg7#  
1...Sf6 2.Qf4 Sd7 3.Sg6#  
model mate, black correction,  
self-interference key

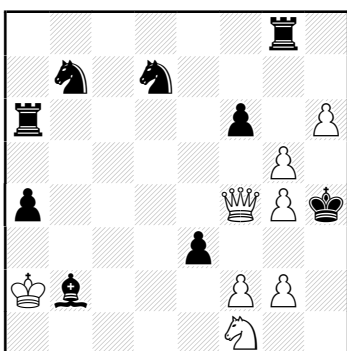
47. Waław GRZANKOWSKI  
1st Pr Szachy 1947



#3 (8 + 11)

1.Be8 ~ 2.Sg4 ~ 3.Sh6#  
1...Rg4 2.Sf7 Rg~ 3.Sh6#  
1...Bg4 2.Sc4 Bh3 3.Se3#  
1...g4 2.Qd5 Kg5 3.Sf3#  
model mate, Umnov, remote unblocking

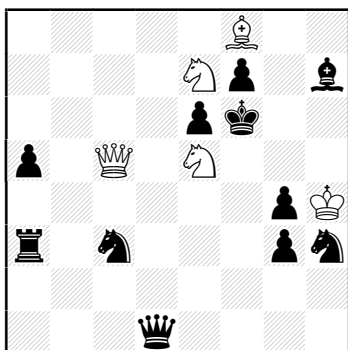
48. Marian WRÓBEL  
2nd Pr Shakhmaty 1948



#3 (8 + 9)

1.g6! ~ 2.Sg3 Sd6 3.g5#  
1...Sd6 2.Sh2 Se5 3.Qf6#  
1...Se5 2.Se3 Sg4 3.Qg4#,  
2...Sd6 3.Qf6#  
1...Rg6 2.g5+ Kh5 3.Sg3#  
1...f5 2.gf5+ Kh5 3.Sg3#  
[1...Be5 2.Qf5, 1...Ra5 2.Sh2]  
model mate, battery, self-interference

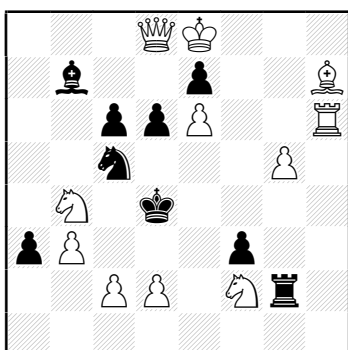
49. Aleksander GOLDSTEIN  
1st Pr Szachy 1948



#3 ( 5 + 11 )

1.Qe3! ~ 2.Qf3+ Qf3 3.Sd7#,  
2...gf3 3.Sg4#, 2...Ke5 3.Sc6#  
1...Qa4 2.Qf4+ Sf4 3.Sg4#, 2...Qf4 3.Sd7#  
1...Ra4 2.Qc3 Rd4 3.Sd7#  
1...S(B)e4 2.Qd4 Qd4 3.Sg4#  
model mate, focal point, sacrifice

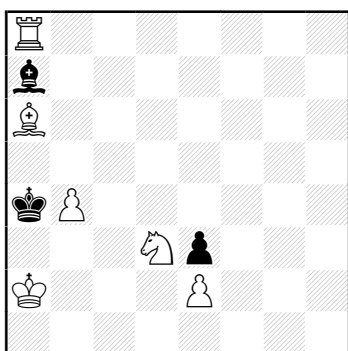
50. Tadeusz CZARNECKI  
2nd Pr Chess Correspondent 1948



#3 ( 11 + 9 )

1.Qa5! ~ (Rg5) 2.c3+ Ke5 3.Sfd3#  
1...Rf2 2.Rh4+ Ke5 3..Re4#  
1...Ba6 2.Sc6+ Kd5 3..Be4#  
[1...Ke5 2.Sfd3+ Kd4 3.c3#]  
model mate, self-pin, ambush key,  
anticipatory pinning

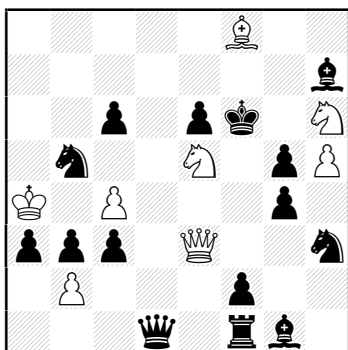
51. Marian WRÓBEL  
1st Pr Berner Tagwacht 1948



#3 ( 6 + 3 )

1.Bc4??, 1.Ra7??, 1.Rc8? Bc5!,  
1.Rd8? Bd4!, 1.Rf8? Bb8!  
1.Re8! zz  
1...Bb8 2.Re4 Ba7(d6) 3.Sb2#,  
2...Be5 3.Sc5#  
1...Bd4 2.Re4 zz Ba1 3.Sc5#,  
2...Ba7 3.Sb2#  
1...Bc5 2.Re5 zz Bb4 3.Sb2#,  
2...Bb6 3.Bb5#  
1...Bb6 2.Rb8 zz Bd4 3.Bb5#  
model mate, meredith, duel, zugzwang,  
stalemate avoidance, option key, masked  
unpinning key

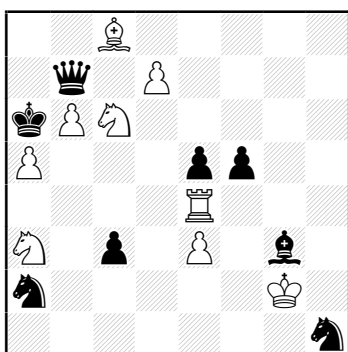
52. Aleksander GOLDSTEIN  
2nd Pr Revista Romana de Sah 1949



#3 ( 8 + 15 )

1.c5! ~ 2.Qf3+ Qf3 3.Sd7#  
1...Sf4 2.Qd3 Qd3 3.Seg4#,  
2...Ke5 3.Bg7#  
1...Be4 2.Qd2 Qd2 3.Seg4#,  
2...Ke5 3.Bg7#  
model mate, focal point, sacrifice,  
remote self-block

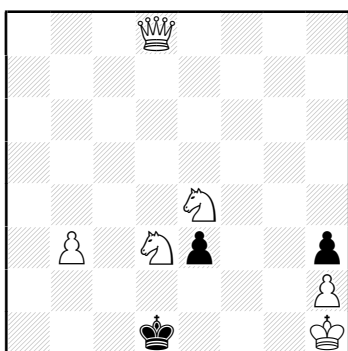
53. Marian WRÓBEL  
1st Pr British Chess Federation 1949



#3 ( 9 + 8 )

1.Ra4! ~ 2.e4 ~ 3.Sb8#  
1...Sb4 2.d8S ~ 3.Bb7#, 2...Qc8 3.Sb4#  
1...Bf2 2.Kh3 ~ 3.Sb8#  
1...e4 2.Sd8 ~ 3.Bb7#  
1...f4 2.Kf1 ~ 3.Sb8#  
model mate, unpin, self-pinning key

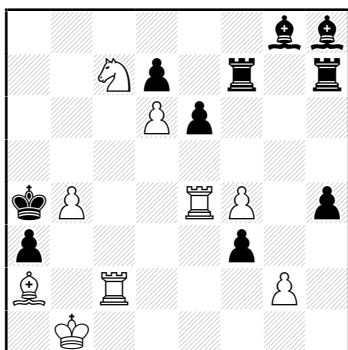
54. T. SZKOP  
Sp Pr Przepiórka MT 1950



#3 ( 6 + 3 )

1.Qf6! ~ (Kc2) 2.Qb2+ Kd3 3.Sc5#  
1...Ke2 2.Qf1+ Kf1 3.Sg3#  
1...e2 2.Se1 ~ (Ke1) 3.Qa1#  
model mate, sacrifice, meredith,  
battery-destroying key

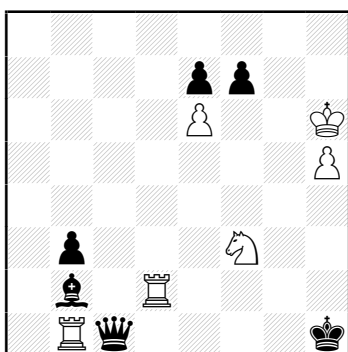
55. Włodzimierz SUCHODOLSKI  
1st Pl Poland-Romenia 1950



#3 ( 9 + 10 )

1.Rcc4! ~ (Rf4) 2.Kc2 ~ (Re4) 3.Bb3#  
1...Rfg7 2.Re3 (Rc3?) ~ 3.Bb3#  
1...Rhg7 2.Rc3 (Re3?) ~ 3.Bb3#  
1...Bc3 2.Rc3 ~ 3.Bb3#  
model mate, self-interference, bi-valve,  
dual avoidance

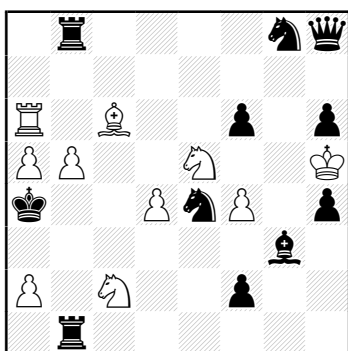
56. Saturnin LIMBACH  
3rd Pr Arbejder Skak 1950



#3 ( 6 + 6 )

1.Kg5 ! zz  
1...f5 2.Kg6 Qb1 3.Rh2#  
1...f6+ 2.Kh4 Qb1 3.Rh2#  
1...fe6 2.Kg4 Qb1 3.Rh2#  
1...Bf6+ 2.Kg4 Qb1 3.Rh2#  
1...Ba3 2.Kh4 Qb1 3.Rh2#  
meredith, model mate, unpin, zugzwang,  
3/4 pickeniny, check-allowing key

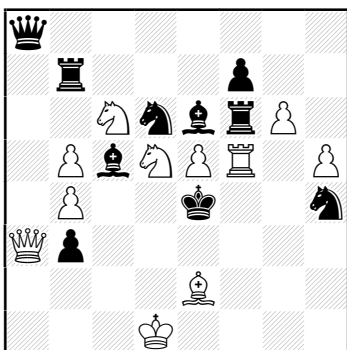
57. Włodzimierz SUCHODOLSKI  
1st Pr Szachy 1951



#3 ( 10 + 11 )

1.Sc4! ~ 2.Sb6+ Rb6 3.ab6#  
1...R1b5+ 2.f5 (d5?) ~ 3.Sb2#  
1...R8b5+ 2.d5 (f5?) ~ 3.Sb6#  
1...Sc5 2.b6+ Rb5 3.Sb2#  
model mate, self-pin, dual avoidance,  
check-allowing key

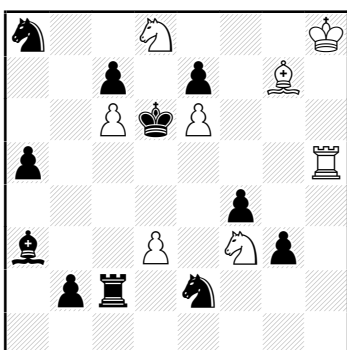
58. Waław GRZANKOWSKI  
1st Pr GKKF 1952



#3 ( 11 + 10 )

1.Qc1! ~ (Bd7) 2.Sf6+ Kf5 3.Bg4#  
1..Qd8 2.ed6 (2.ef6? Sdf5!) Rf5 3.Sc3#  
1..Qh8 2.ef6 (2.ed6? Rf5!) Sdf5 3.Sc3#  
[1..Kd5 2.Qd2+, 1..Sf3 2.Bf3, 1..Be3  
2.Qe3+, 1..Rg6 2.Rf4+, 1..Se8 2.Qf4(c4)+]  
model mate, dual avoidance

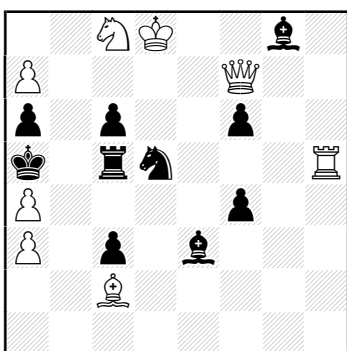
59. Waław HEBELT  
1st Pr Shakhmaty v SSSR 1952



#3 ( 8 + 11 )

1.Bc3! ~ 2..Se5 Kc5 3.Sc4#  
1...Sb6 2.Sg5 Kc5 3.Se4#  
1...Bb4 2.Be5+ Kc5 3.Bc7#  
[1...Rc3 2.Sd2, 1...Sc3 2.Sd4]  
model mate, sacrifice key, battery,  
remote self-block

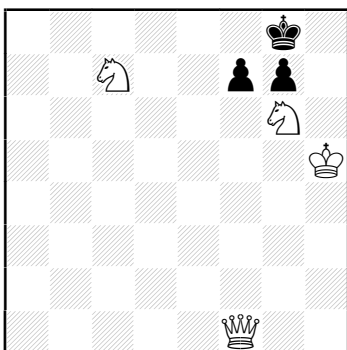
60. Tadeusz CZARNECKI  
1st/2nd Pr Szachy 1954



#3 ( 8 + 10 )

1.Sd6! ~ (Bf7) 2.a8S ~ (Bh5) 3.Sb7#  
1...Bc1 2.Sc4+ Rc4 3.Qc7#  
1...Bh7 2.Qc7+ Sc7 3.Sc4#  
model mate, half-pin, flight-giving key

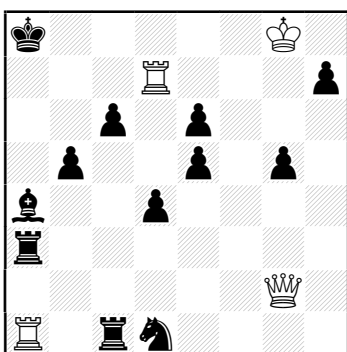
61. Władysław ROSOLAK  
C Szachy 1955



#3 ( 4 + 3 )

1.Se6! zz  
 1...f5 2.Sg5 ~ 3.Qc4#  
 1...f6 2.Qc4 Kh7 3.Sf8#, 2...Kf7 3.Sc7#  
 1...fe6 2.Qf8+ Kh7 3.Qf8#  
 1...fg6+ 2.Kg6 ~ 3.Qf8#  
 1...Kh7 2.Sg5+ Kg8 3.Qf7#  
 miniature, zugzwang, pickeniny,  
 sacrifice key

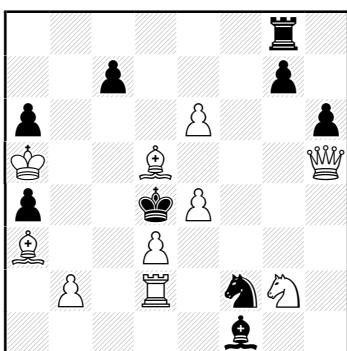
62. Mieczysław PFEIFFER  
1st Pr Start 1955-56



#3 ( 4 + 12 )

1.Qg4! ~ 2.Qh5 Ra1 3.Qe8#  
 1...Rh3 2.Qe6 Ra1 3.Qe8#  
 1...Bc2 2.Qg5 Ra1 3.Qd8#  
 1...Rf3 2.Qf3 Ra1 3.Qf8#  
 model mate, half-pin

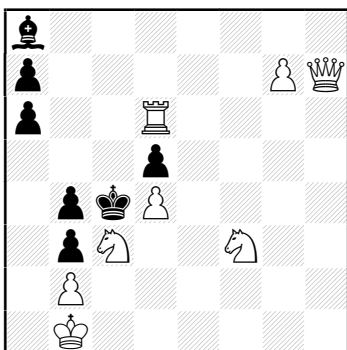
63. Marian WRÓBEL  
2nd/3rd Pr Czarnecki JT 1955/56



#3 ( 10 + 9 )

1.Qh2! ~ (Bg2) 2.Bc5+ Kc5 3.d4#  
 1...Bd3 2.Se1 ~ 3.Sc2#  
 1...Sd3 2.Qc7 Bg2 3.Bc5#  
 [1...Se4 2.Qf4]  
 model mate, self-pin, retreating key

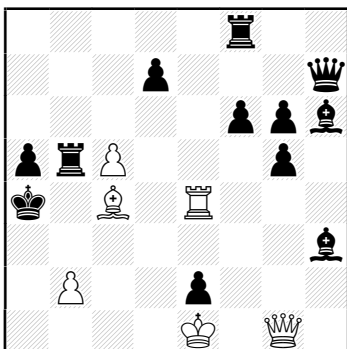
64. Waław HEBELT  
3rd Hm Shakhmaty v SSSR 1956



#3 ( 8 + 7 )

1.Sb5! ~ (Bb7) 2.Ra6 Ba6 3.Sd6#  
 1...a5 2.Rb6 ab6 3.Sd6#  
 1...ab5 2.Qe4 de4 3.Se5#  
 1...Bc6 2.Rd5 Bd5 3.Sd6#  
 [1...Kb5 2.Qd3+]  
 model mate, sacrifice key, flight-giving key,  
 sacrifice

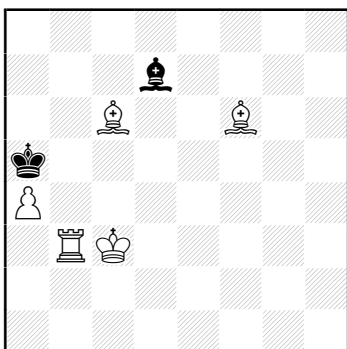
65. Marian WRÓBEL  
1st Pr British Chess Federation 1957-58



#3 ( 6 + 12 )

1.Qd4! ~ 2.Qd3 Rb2 3.Bb5#  
 1...g4 2.Bf7+ Rb4 3.Qd7#  
 1...Bg7 2.Be6+ Rb4 3.Qd7#  
 1...Rb2 2.Qb2 Rb8 3.Bb5#  
 [1...Rb3 2.Be2+]  
 model mate, valve, self-pin, battery

66. Eugeniusz IWANOW  
Prace 1958

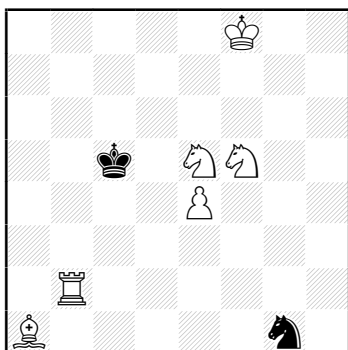


#3 ( 5 + 2 )

1.Rb7! zz  
 1...Bc8 2.Bb5 Bb7 3.Bd8#  
 1...Be8 2.Bd4 Bc6 3.Ra7#  
 1...Bc6 2.Ra7+ Kb6 3.Bd4#  
 1...Ka6 2.Bd4 Bc6 3.Ra7#  
 model mate, miniature, focal point, zugzwang



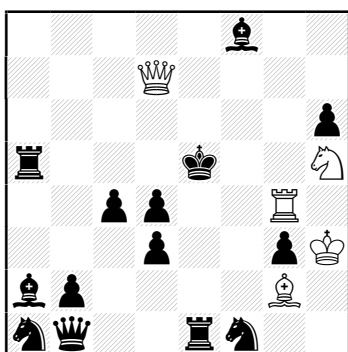
67. Waldemar TURA  
3rd Pr Szachy 1958



#3 ( 6 + 2 )

1.Sd6! ~ 2.Sb7+ Kd4 3.Re2#  
1...Kd4 2.Rb3+ Kc5 3.Sb7#  
1...Kd6 2.Rc2 ~ 3.Rc6#  
model mate, battery, flight-giving key,  
meredith

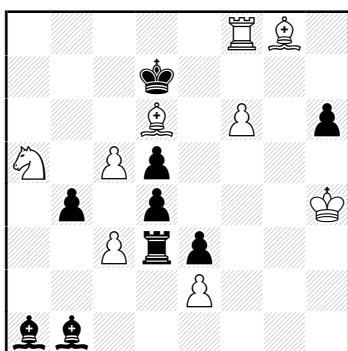
68. Leopold SZWEDOWSKI  
1st Pr Die Schwalbe 1961



#3 ( 5 + 14 )

1.Rf4? ~ 2.Rf5# but 1...d2 !  
1.Rg6? ~ 2.Qe6# but 1...c3 !  
1.Bc6 ! ~ 2.Qd4+ Kf5 3.Qf6#,  
2...Ke6 3.Qf6#  
1...Sc2 2.Rf4 ~ 3.Rf5#, 2...Sce3 3.Re4#,  
2...Rd5 3.Qd5#  
1...Sb3 2.Rg6 ~ 3.Qe6#, 2...Sc5 3.Qd5#  
[1...Bd6 2.Qg7+]  
logical play, self-interference, Dresden

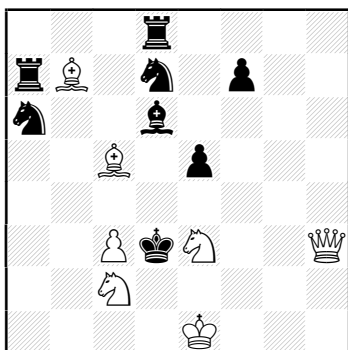
69. Włodzimierz SUCHODOLSKI  
4th Hm Wróbel MT 1961



#3 ( 9 + 9 )

1.Bc7! ~ (Rc3) 2.Bb6 Rc5 3.Rd8#  
1...Bc3 2.Bg3 ~ 3.c6#  
1...dc3 2.Bf4 ~ 3.c6#  
1...Rd1 2.Bh2 ~ 3.c6#  
1...Kc7 2.Be6 ~ 3.Rc8#  
model mate, obstruction, flight-giving key,  
sacrifice key

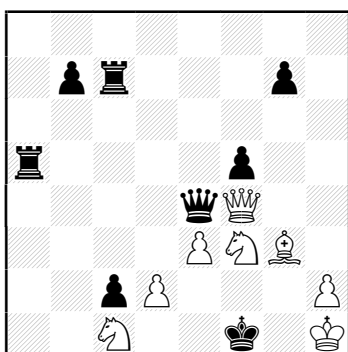
70. Andrzej TRZĘSOWSKI  
2nd Pr Wróbel MT 1961



#3 ( 7 + 8 )

1.Sa1! ~ (Rb7) 2.Qf1+ Kc3 3.Sd1#  
 1...Sac5 2.Sf5+ (Sec2?) Kc4 3.Sd6#  
 1...Sdc5 2.Sec2+ (Sf5?) Kc4 3.Sa3#  
 1...Bc5 2.Sd1+ Kc4 3.Qf1#  
 [1...Kc3 2.Qg2(h2)]  
 model mate, Siers, battery, remote self-block,  
 dual avoidance, retreating key

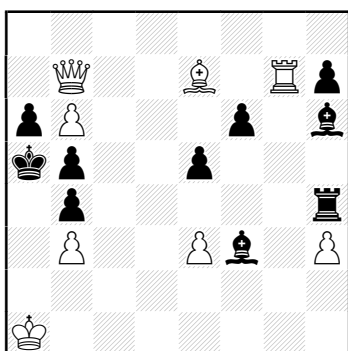
71. Andrzej TRZĘSOWSKI  
2nd Pr Wróbel MT 1965



#3 ( 8 + 8 )

1.h4! ~ 2.Qe4 fe4 3.Sh2#  
 1...Qc6 2.Qc4+ Qc4 3.Sh2#  
 1...Qd5 2.Qf5 Qf5 3.Sh2#  
 model mate, Holzhausen, unpin, sacrifice

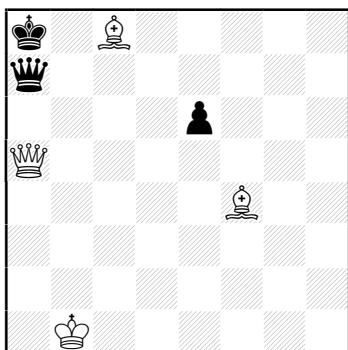
72. Włodzimierz SUCHODOLSKI  
2nd Pr Szachy 1966



#3 ( 8 + 10 )

1.Bd8! ~ 2.Qa6+ Ka6 3.Ra7#  
 1...Bb7 2.Rg2 Bg2 3.b7#  
 1...Bg7 2.Qe4 R(B)e4 3.b7#  
 model mate, sacrifice, Novotny

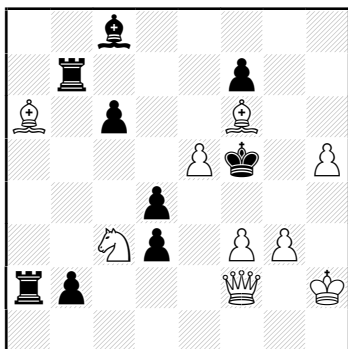
73. Jerzy KONIKOWSKI  
1st Pr Vecherni Sverdlovsk 1967



#3 (4 + 3)

1.Ba6! ~ 2.Qd8+ Qb8+ 3.Qb8#  
1...Qg1+ 2.Bf1+ Qa7 3.Bg2#,  
2...Kb7 3.Qa6#  
1...Qb7+ 2.Bb5+ Qa7 3.Bc6#  
1...Qh7+ 2.Bd3+ Qa7 3.Be4#,  
2...Kb7 3.Qa6#  
1...Qb6+ 2.Qb6 e5 3.Qb7#  
[1...e5 2.Qd5+]  
model mate, self-pin, miniature, battery,  
unpinning key, check-allowing key,  
manoeuvre

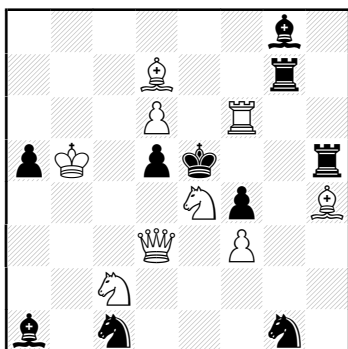
74. Włodzimierz SUCHODOLSKI  
1st Pr Problemista 1968



#3 (9 + 9)

1.Qc2! ~ 2.Bd3+ Ke6 3.Bf5#  
1...Ra6 2.Qg2 Ke6 3.Qh3#  
1...dc2 2.Bf1 Ke6 3.Bh3#  
1...dc3 2.Qd3+ Ke6 3.Bc4#  
1...Ke6 2.Qb3+ Kd7 3.Qf7#, 2...Kf5 3.Bd3#,  
2...Rb3 3.Bc8#  
model mate, sacrifice key, retreating key

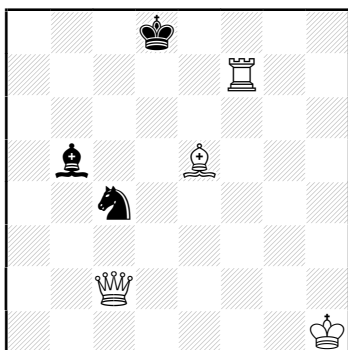
75. Leopold SZWEDOWSKI  
1st Pr Themes 64 1970



#3 (9 + 10)

1.Sf2? ~ 2.Qe3+ fe3 3.f4#  
1...Rhg5 2.Sg4+ Rg4 3.Qf5#  
1...Rgg5 2.Qf5+ Rf5 3.Sg4# but 1...Sf3 !  
1.Se3! ~ (Sd3) 2.Re6+ Be6 3.Bf6#  
1...Rhg5 2.Sg4+ Rg4 3.Rf5#  
1...Rgg5 2.Rf5+ Rf5 3.Sg4#  
[1...Rg6 2.Rg6]  
Plachutta, change of continuation

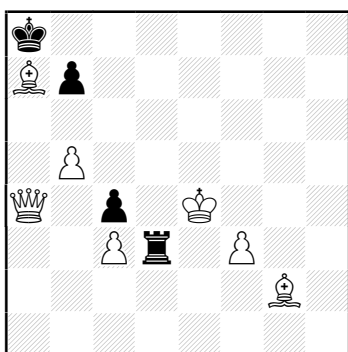
76. Piotr RUSZCZYŃSKI  
1st Pr De Waarheid 1970



#3 ( 4 + 3 )

1.Qg6 ~ 2.Rf8+ Kd7 3.Qe8#  
1 ... Be8 2.Bc7+ Kc8 3.Qa6#  
1 ... Se5 2.Qd6+ Sd7 3.Rf8#  
1 ... Bc6+ 2.Qc6 Se5 3.Qa8#  
model mate, miniature

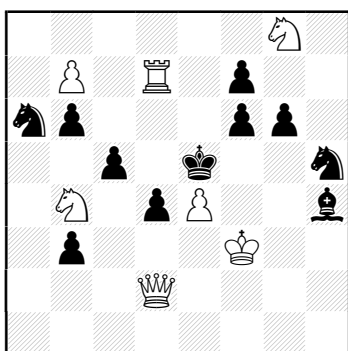
77. Włodzimierz SUCHODOLSKI  
1st/2nd Pr Szachy 1970



#3 ( 7 + 4 )

1...Rd4+ 2.Kd4 b6 3.f4#  
1...Re3+ 2.Ke3 b6 3.f4#  
1.Bh3! ~ 2.Bb6+ Kb8 3.Qa7#  
1...Rd4+ 2.Bd4+ Kb8 3.Be5#  
1...Re3+ 2.Be3+ Kb8 3.Bf4#  
1...Rd7 2.Bd7 b6 3.Bc6#  
model mate, change of continuation,  
battery, meredith

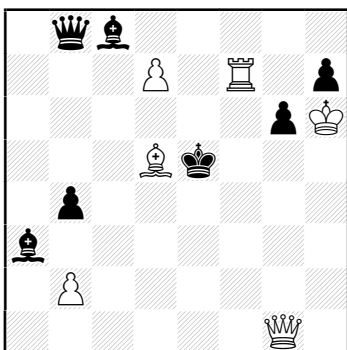
78. Piotr RUSZCZYŃSKI  
2nd Pr Szachy 1972



#3 ( 7 + 11 )

1.Qh6! ~ (Ke6) 2.Qf8 Kd7 3.Qe7#  
1...f5 2.Rd5+ Ke6 3.ef5#  
1...g5 2.Re7+ Kd6 3.e5#  
model mate, remote half-pin, ambush key

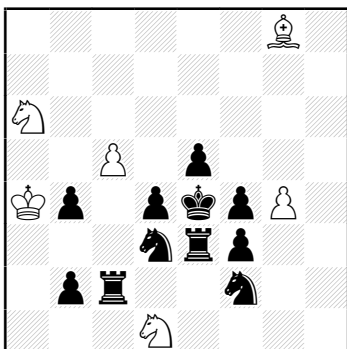
79. Piotr RUSZCZYŃSKI  
4th Pr Chess Life 1972



#3 ( 6 + 7 )

1.Bh1! ~ (Bb7) 2.Qc5+ Bd5 3.Qd5#  
 1...b3 2.Qg3+ Ke6 3.d8S#  
 1...Qa7 2.Re7+ Kd6 3.dc8S#  
 1...Qc7 2.Qe3+ Kd6 3.Qe7#  
 1...Qb6 2.Qb6 ~ 3.Qf6#  
 model mate, under-promotion,  
 chameleon-echo, retreating key,  
 give-and-take key

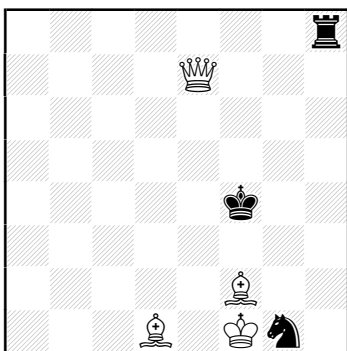
80. Waldemar TURA  
1st Pr Szachy 1973



#3 ( 6 + 11 )

1...Rc5 2.Sf2+ Sf2 3.Sc5#  
 1...Sc5+ 2.Sc5+ Rc5 3.Sf2#  
 1.Kb5! ~ (Sd1) 2.Bh7+ Kd5 3.Sc7#  
 1...Rc5+ 2.Sc5+ Sc5 3.Sf2#  
 1...Sc5 2.Sf2+ Rf2 3.Sc5#  
 model mate, Tura, check-allowing key

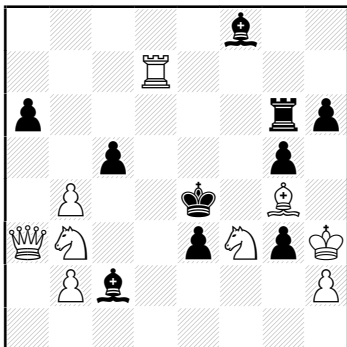
81. Mieczysław ZALEWSKI  
5th Hm Szachy 1974



#3 ( 4 + 3 )

1.Bc2! ~ 2.Qf6+ Kg4 3.Qf5#  
 1...Rf8 2.Qe4+ Kg5 3.Qh4#  
 1...Rh5 2.Qe3+ Kg4 3.Qg3#  
 1...Rh6 2.Qe4+ Kg5 3.Qf5#  
 1...Kg4 2.Qg7+ Kh5 3.Qg6#  
 model mate, miniature, flight-giving key,  
 chameleon-echo, self-block

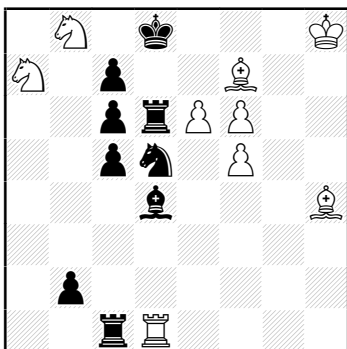
82. Leopold SZWEDOWSKI  
2nd Pr Czarnecki MT 1974



#3 (9 + 10)

1.Qa4! ~ (Bb3) 2.bc5+ (Ba4) 3.Rd4#  
1...Rd6 2.Sc5+ Kd5 3.Be6#  
1...Bd6 2.Qc6+ Kd3 3.Se5#  
model mate, Grimshaw, self-pin

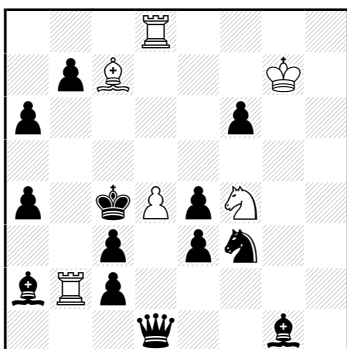
83. Waldemar TURA  
2nd Pl WCCT 1972-75



#3 (9 + 9)

1...Bf6+ 2.Bf6+ Sf6 3.Sbc6#  
1...Sf6 2.Sbc6+ Rc6 3.Bf6#  
1.Kg8! (1.Kh7? Re6!)  
1...~ (Rd1) 2.e7+ Se7+ 3.fe7#  
1...Bf6 2.Sbc6+ Rc6 3.Bf6#  
1...Sf6+ 2.Bf6+ Bf6 3.Sbc6#  
model mate, Tura, masked half-pin,  
option key

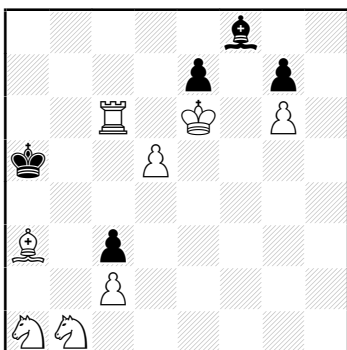
84. Piotr RUSZCZYŃSKI  
1st Pr UV CSTV 1975



#3 (6 + 13)

1.Rc8! ~ 2.Bb6/Be5#  
1...Qd4 2.Ba5+ (Bd6+?) Qc5 3.Rb4#  
1...Sd4 2.Bd6+ (Ba5+?) Sc6 3.Rb4#  
1...cb2 2.Ba5+ Kd4 3. Bc3#  
1...Kd4 2 Kf6 Kc5 3.Be5#  
model mate, self-pin, self-block, battery,  
dual avoidance, flight-giving key

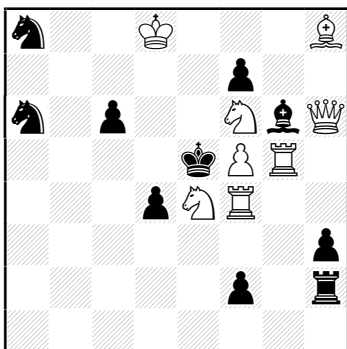
85. Mieczysław ZALEWSKI  
3rd Pr Szachy 1975



#3 ( 8 + 5 )

1...Ka4 2.Sb3 Kb5 3.Sc3#  
 1...Kb5 2.Sc3+ Ka5 3.Sb3#  
 1.Bc5! ~ 2.Sa3 Ka4 3.Ra6#  
 1...Ka4 2.Sc3+ Ka5 3.Sb3#  
 1...Kb5 2.Sb3 Ka4 3.Sc3#  
 Tura, white to play

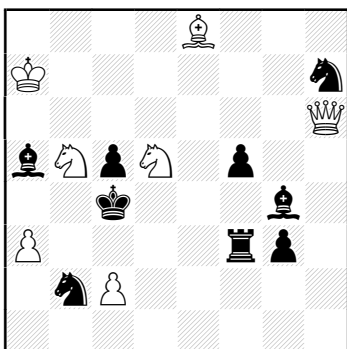
86. Piotr RUSZCZYŃSKI  
Sachowe umeni 1976



#3 ( 8 + 10 )

1.Sd2! ~ 2.Re4+ Kd6 3.Qf8#  
 1...Kf4 2.Rh5+ Ke5 3.Sc4#  
 1...Sc5 2.Sg4+ Kf4 3.Be5#  
 1...c5 2.Ke7 Kf4 3.Sd5#  
 [1...Kd6 2.Qf8+]  
 model mate, battery, flight-giving key

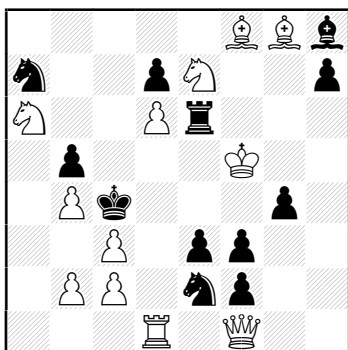
87. Waclaw HEBELT  
2nd Pr Szachy 1978



#3 ( 7 + 9 )

1.Qe3! ~ 2.Qf3 Bf3 3.Se3#  
 1...Sd1(a4) Qe2+ Kd5 3.c4#  
 1...Kd5 2.Bf7+ Kc6 3.Qe8#  
 1...Bc7 2.Qf4+ Rf4 3.Se3#, 2...Kd5 3.Sc7#,  
 2...Bf4 3.Sb6#  
 model mate, sacrifice

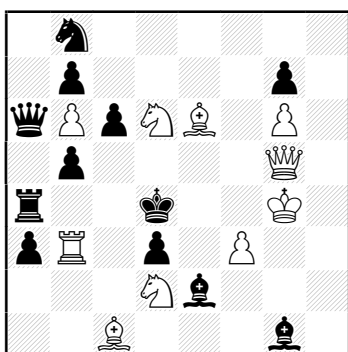
88. Ryszard KAPICA  
1st Pr Gazeta Częstochowska 1981



#3 (12 + 12)

1.Rd5? Rf6+!, 1.Sd5? Re5+!, 1.Rd3? Sg3+!  
1.Bh6! zz  
1...Be5 2.Sd5 Rf6+ 3.Sf6#  
1...Bf6 2.Rd5 Re5+ 3.Re5#  
1...g3 2.Rd3 Sd4+ 3.Rd4#  
[1...Sc6 2.Sc6, 1...Sc8 2.Sc8, 1..Bg7 2.Bg7]  
zugzwang, battery, unpin, logical play

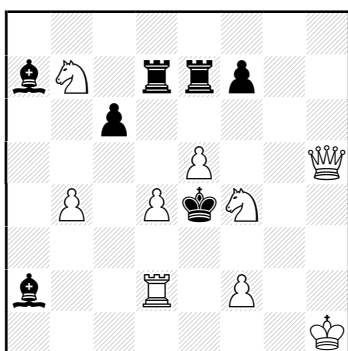
89. Leopold SZWEDOWSKI  
1st Pr Szachy 1982



#3 (10 + 12)

1.Qe7! ~ 2.Sf5+ Ke5+ 3.Bc4#  
1...Bf3+ 2.Sf3+ Kc5+ 3.Sc4#  
1...Kc5+ 2.Sc4+ Kd4 3.Qd6#  
1...Ke5+ 2.Bc4+ Kd4 3.Sf5#  
1...Ke3+ 2.Se4+ Kd4 3.Qg7#  
battery, cross check, flight-giving key,  
ambush key, check-allowing key

90. Piotr RUSZCZYŃSKI  
2nd Pr Szachy 1983

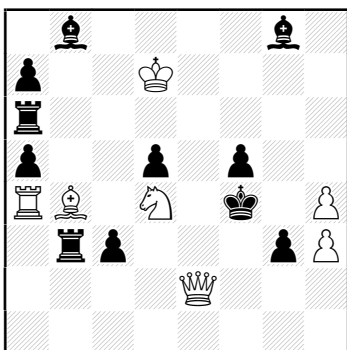


#3 (9 + 7)

1.Sg2! ~ 2.Qg4+ Kd5 3.Se3#  
1...Bd4 2.Sc5+ Kd5 3.Se3#, 2...Bc5 3.f3#  
1...Rd4 2.Sd6+ Kd5 3.Sf4#, 2...Rd6 3.f3#  
1...c5 2.d5 Rb7 3.f3#  
model mate, sacrifice, clearance, self-pin,  
give-and-take key



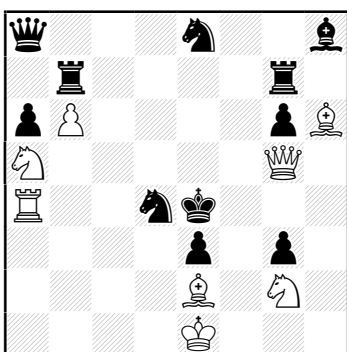
91. Waldemar TURA  
3rd Pr Suchodolski JT 1984



#3 ( 7 + 11 )

1...Rd6+ 2.Bd6+ Bd6 3.Se6#  
 1...Be6+ 2.Se6+ Re6 3.Bd6#  
 1.Ke7! ~ 2.Qf3+ Ke5 3.Qe3#  
 1...Bd6+ 2.Bd6+ Rd6 3.Se6#  
 1...Re6+ 2.Se6+ Be6 3.Bd6#  
 [1...c2 2.Bd2+]  
 half-battery, Ruchlis, check-allowing key

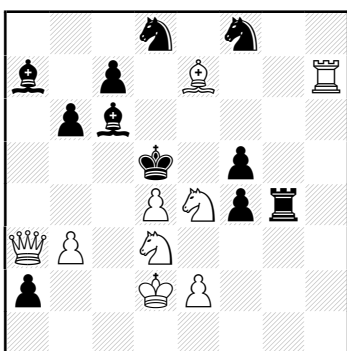
92. Jan RUSINEK  
1st Pr Szachy 1986



#3 ( 8 + 11 )

1.Se3? ~ 2.Qf4/Qd5# but 1...Rbf7!  
 1.Sb3? ~ 2.Rd4/Sc5# but 1...Rgc7!  
 1.Rc4! ~ 2.Bd3+ Kf3 3.Sh4#,  
 2...Kd3 3.Qe3#  
 1...Rbe7 2.Sb3 Qd5 3.Qf4#  
 1...Rge7 2.Se3 Be5 3.Qg6#  
 logical play, Dresden, self-interference,  
 line-opening, self-block

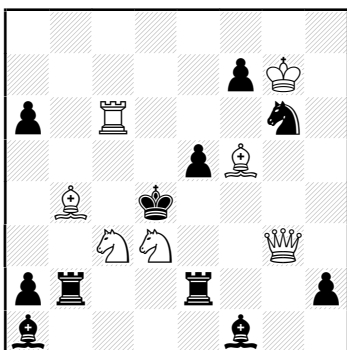
93. Piotr RUSZCZYŃSKI  
1st Pr Polish Chess Federation 1986



#3 ( 9 + 11 )

1.Qa6! ~ (a1Q) 2.Qc4+ Ke4 3.Sf2#  
 1...b5 2.Sf6+ Ke6 3.d5#  
 1...Bb5 2.Sc3+ Ke6 3.Sc5#  
 1...Ke6 2.d5+ Bd5 3.Sec5#  
 model mate, remote half-pin, ambush key

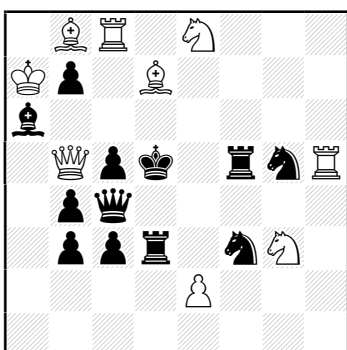
94. Jan RUSINEK  
2nd Pr Die Schwalbe 1987



#3 ( 7 + 11 )

1.Sb2? but 1...Rb2!  
1.Se2+? but 1...Re2!  
1.Rc5! ~ 2.Sb5+ ab5 3.Bc3#  
1...Rbc2 2.Sb2 Bb2 3.Qd3#,  
2...Rb2 3.Qd3#, 2...Rc3 3.Qc3#  
1...Rec2 2.Se2+ Be2 3.Qf2#,  
2...Re2 3.Bc3#  
[1...Rbd2 2.Sc1 Rb2 3.Qd3#  
1...Rb1 (b3,b4) 2.Se2+]  
logical play, self-interference, Umnov

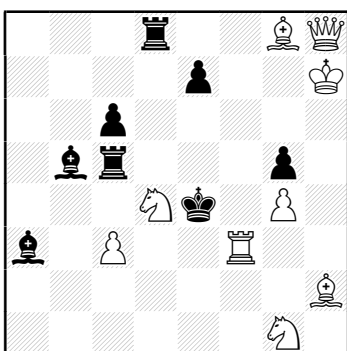
95. Marek KWIATKOWSKI  
1st Pr Szachy 1988



#3 ( 9 + 12 )

1...Kd4 2.Sf5+ Kd5(e4) 3.Sf6#  
1.Rc6! ~ 2.Rd6+ Ke5 3.Rd3#  
1..Rd4 2.Be6+ (Sf6+?, e4+?) Se6 3.Sf6#  
1..Sd4 2.Sf6+ (e4+?, Be6+?) Rf6 3.e4#  
1..Qd4 2.e4+ (Be6+?, Sf6+?) Se4 3.Be6#  
[1...Se4 2.Be6+, 1...Sf7 2.Sf6+]  
cyclic Stocchi, half-pin, masked interference,  
cycle AB-BC-CA

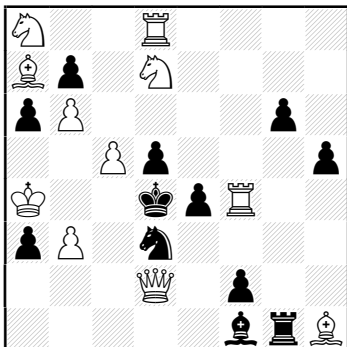
96. Jan RUSINEK  
4th Hm The Problemist 1989



#3 ( 9 + 8 )

1...Rcd5 2.Sh3 Rd4 3.Sg5#  
1...Rdd5 2.Sf5 Rf5 3.Qd4#  
1.Sb3? ~ 2.Sc5+ Bc5 3.Qe5#  
1...Rcd5 2.Sd2+ Rd2 3.Qe5#  
1...Rdd5 2.Qe5+ Re5 3.Sd2# but 1...Rf5!  
1.Se6! ~ 2.Sc5+ Bc5 3.Qe5#  
1...Rcd5 2.Qd4+ Rd4 3.Sg5#  
1...Rdd5 2.Sg5+ Rg5 3.Qd4#  
[1...Rf5 2.gf5]  
Zagorujko, Plachutta, flight-giving key

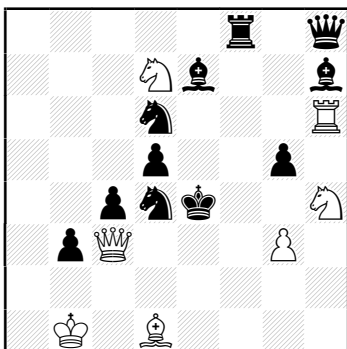
97. Marek KWIATKOWSKI  
2nd Pr Schweizerische Schachzeitung 1990



#3 ( 11 + 12 )

1.Bb8? ~ 2.Be5# but 1..Rg5!  
1.Sc7? ~ 2.Se6# but 1..Bh3!  
1.Bg2?  
1..Rg2 2.Sc7 ~ 3.Se6#  
1..Bg2 2.Bb8 ~ 3.Be5 but 1..a2!  
1Sf8! ~ 2.Re4+ Kc5 3.Qc3(c2)#  
1..Rg2 2.Bb8 (~ 3.Se6#) Kc5 3.Qc3#  
1..Bg2 2.Sc7 (~ 3.Rd5#) Kc5 3.Qc3#  
[1...Ke5 2.Bb8+ Kd4 3.Se6#]  
reciprocal change, Grimshaw, Novotny,  
logical play, flight-giving key

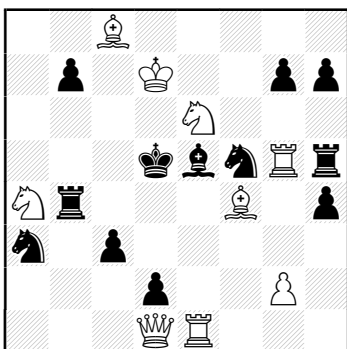
98. Leopold SZWEDOWSKI  
3rd Hm Probleemblad 1990



#3 ( 7 + 11 )

1.Sf5! ~ 2.Qe3+ Kf5 3.g4#  
1...Sdf5 2.Re6+ Se6 3.Bf3#  
1...Bf5 2.Bf3+ Sf3 3.Sc5#  
1...Rf5 2.Sc5+ Ke5 3.Re6#  
cycle AB-BC-CA, flight-giving key,  
sacrifice key, cyclic Stocchi

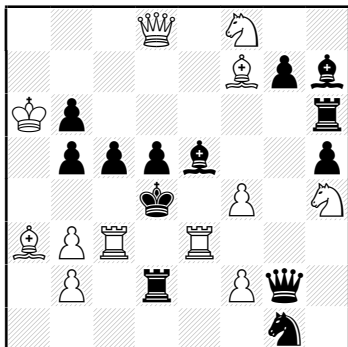
99. Marek KWIATKOWSKI  
1st Pr 3rd TT Phenix 1991



#3 ( 9 + 12 )

1.Re4! ~ 2.Qf3 Re4 3.Sb6#  
1..Bd4 2.Sb6+ (Qb3+?) Bb6/Rb6/Ke4  
3.Bb7/Rd4/Qf3#  
1..Sd4 2.Qb3+ (Sb6+?) Sb3/Rb3/Ke4  
3.Sc3/Rd4/Sac5#  
1..Rd4 2.Qe2 (Qb3+?, Sb6+?) Rb4 3.Re5#  
1..Sc4 2.Rd4+ Bd4/Sd4 3.Qf3/Sc3#  
Keller paradox, half-pin, dual avoidance,  
give-and-take key, sacrifice key

100. Marek KWIATKOWSKI  
5th Pl 4th WCCT 1989-92



#3 ( 12 + 13 )

1..Bg6 2.Se6#, 1..Rg6 2.Sf5#,  
1..Qg6 2.Qd5#  
1.Sfg6? Bg6!, 1.Shg6? Rg6!, 1.Bg6? Qg6!  
1.Bb4! ~ 2.Rc4+ bc4 3.Bc3#  
1..cb4 2.Sfg6 Bg6/Rg6/Qg6  
3.Qb6/Sf5/Qd5#  
1..Rc2 2.Shg6 Bg6/Rg6/Qg6  
3.Se6/Rcd3/Qd5#  
1..Se2 2.Bg6 Bg6/Rg6/Qg6  
3.Se6/Sf5/Sf3#  
Novotny, logical play, sacrifice key

### Index of themes (motifs)

- 3/4 albino - 24  
 3/4 pickeniny - 56  
 ambush key - 8, 50, 78, 89, 93  
 anticipatory pinning - 50  
 anti-junction point - 45  
 battery - 5, 16, 31, 32, 36, 43, 48, 59, 65, 67, 70, 73, 77, 84, 86, 88, 89  
 battery-destroying key - 7, 35, 54  
 bi-valve - 30, 55  
 black correction - 45, 46  
 chameleon-echo - 79, 80  
 change of continuation - 75, 77  
 check-allowing key - 13, 21, 27, 38, 42, 56, 57, 73, 81, 89, 91  
 clearance - 90  
 cross check - 89  
 cross - 32  
 cycle AB-BC-CA - 95, 98  
 cyclic Stocchi - 95, 98  
 Dresden - 68, 92  
 dual avoidance - 43, 44, 55, 57, 58, 70, 84, 99  
 duel - 51  
 echo - 7  
 flight-giving key - 1, 3, 10, 18, 25, 29, 31, 33, 37, 39, 60, 64, 67, 69, 80, 84, 86, 89, 96, 97, 98  
 focal point - 6, 17, 20, 26, 44, 49, 52, 66  
 give-and-take key - 2, 4, 13, 17, 79, 90, 99  
 Grimshaw - 33, 82, 97  
 half-battery - 91  
 half-pin - 60, 62, 95, 99  
 Holzhauzen - 71  
 Keller paradox - 99  
 line-opening - 92  
 logical play - 68, 88, 92, 94, 97, 100  
 manoeuvre - 7, 13, 73  
 masked half-pin - 83  
 masked interference - 95  
 masked unpinning key - 51  
 meredith - 4, 7, 19, 38, 42, 51, 54, 56, 67, 77  
 miniature - 37, 61, 66, 73, 76, 80  
 model mate - 1, 2, 3, 4, 5, 6, 7, 8, 9, 10, 11, 12, 13, 14, 15, 16, 17, 18, 19, 21, 22, 23, 24, 25, 26, 27, 28, 29, 30, 31, 32, 33, 34, 35, 36, 37, 38, 39, 40, 41, 42, 43, 44, 45, 46, 47, 48, 49, 50, 51, 52, 53, 54, 55, 56, 57, 58, 59, 60, 62, 63, 64, 65, 66, 67, 69, 70, 71, 72, 73, 74, 76, 77, 78, 79, 80, 81, 82, 83, 84, 86, 87, 90, 93  
 Novotny - 72, 97, 100  
 obstruction - 27, 34, 69  
 option key - 23, 45, 51, 83  
 pickeniny - 61  
 Plachutta - 15, 75, 96  
 reciprocal change - 97  
 remote half-pin - 78, 93  
 remote self-block - 8, 52, 59, 70  
 remote unblocking - 36, 47  
 retreating key - 5, 11, 19, 28, 63, 70, 74, 79  
 Ruchlis - 91  
 sacrifice key - 1, 2, 3, 9, 14, 17, 18, 21, 22, 25, 29, 37, 59, 61, 64, 69, 74, 98, 99, 100  
 sacrifice - 3, 15, 20, 31, 35, 38, 41, 45, 49, 52, 54, 64, 71, 72, 87, 90  
 self-block - 10, 12, 14, 16, 25, 32, 35, 43, 80, 84, 92  
 self-interference key - 46  
 self-interference - 36, 44, 48, 55, 68, 92, 94  
 self-pin - 29, 43, 50, 57, 63, 65, 73, 82, 84, 90  
 self-pinning key - 42, 53  
 Siers - 70  
 stalemate avoidance - 51  
 star - 37  
 Tura - 81, 83, 85  
 Umnov - 47, 94  
 under-promotion - 79  
 unpin - 27, 28, 30, 34, 40, 42, 53, 56, 71, 88  
 unpinning key - 22, 73  
 valve - 40, 65  
 white to play - 85  
 Zagorujko - 96  
 zugzwang - 1, 2, 3, 6, 14, 17, 20, 28, 42, 51, 56, 61, 66, 88